

The C3506106VN Catadioptric lens was developed for helicopter mounted stabilized platforms.

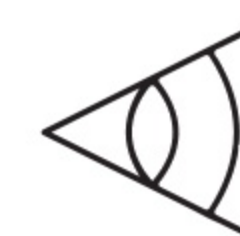
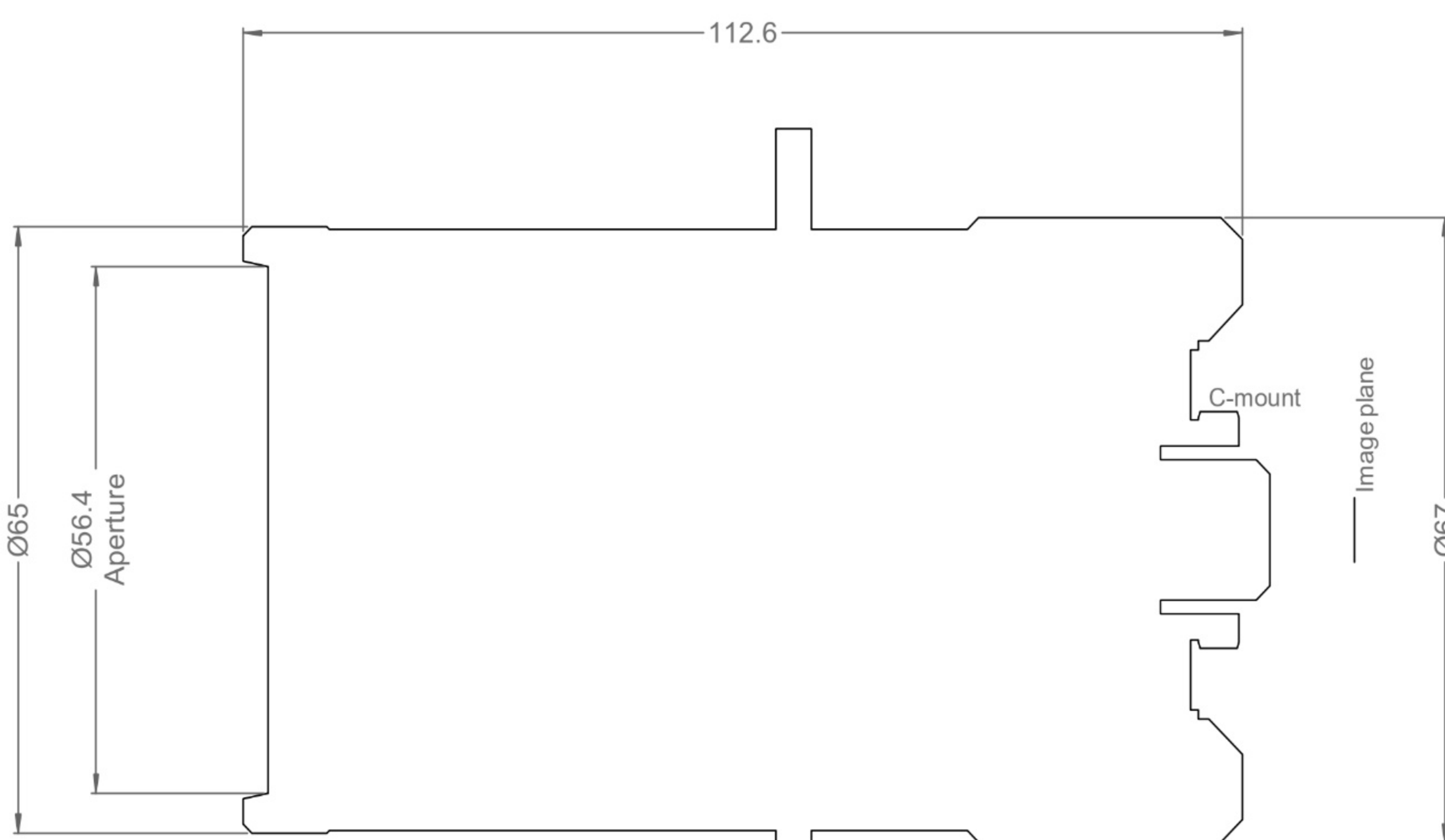
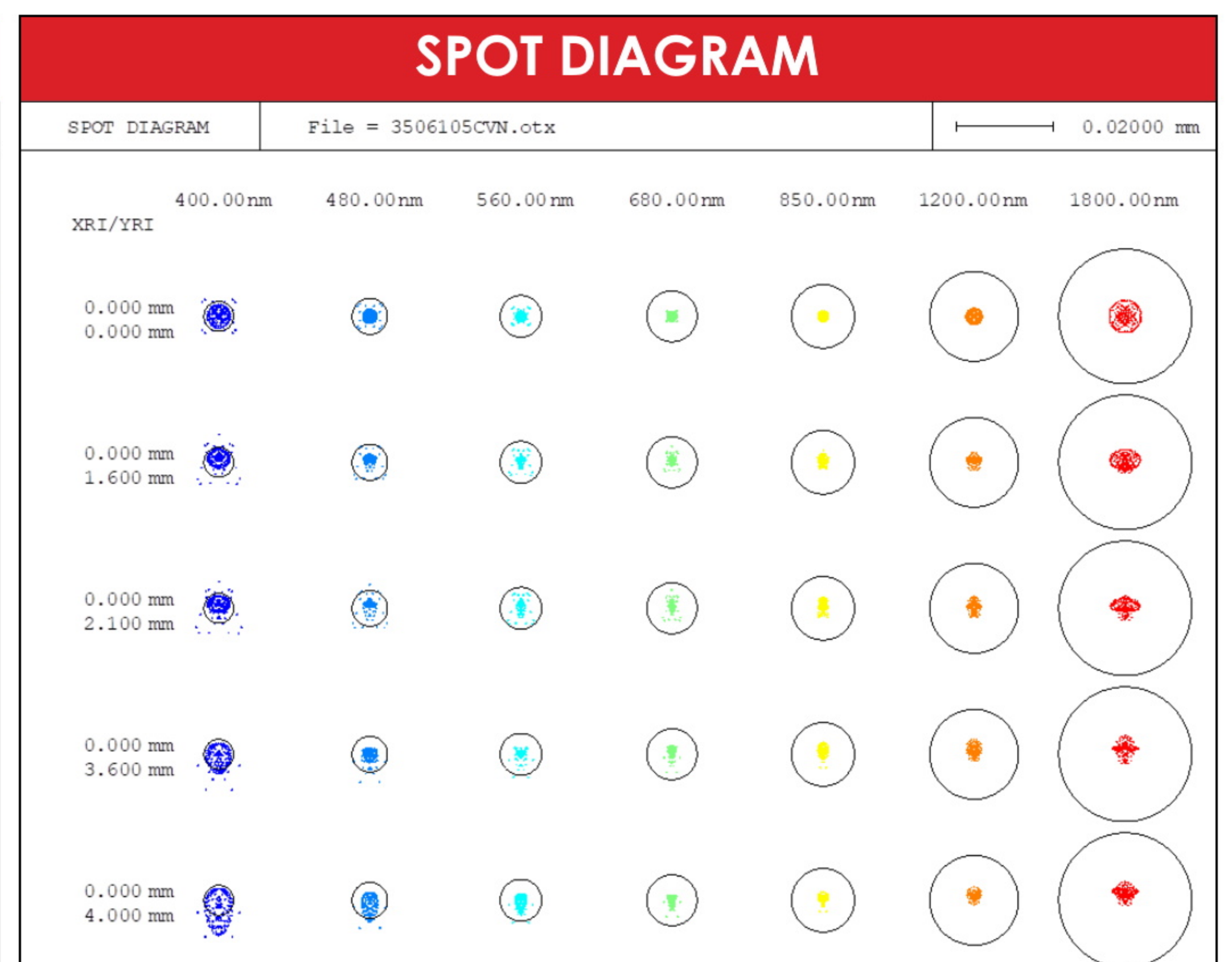
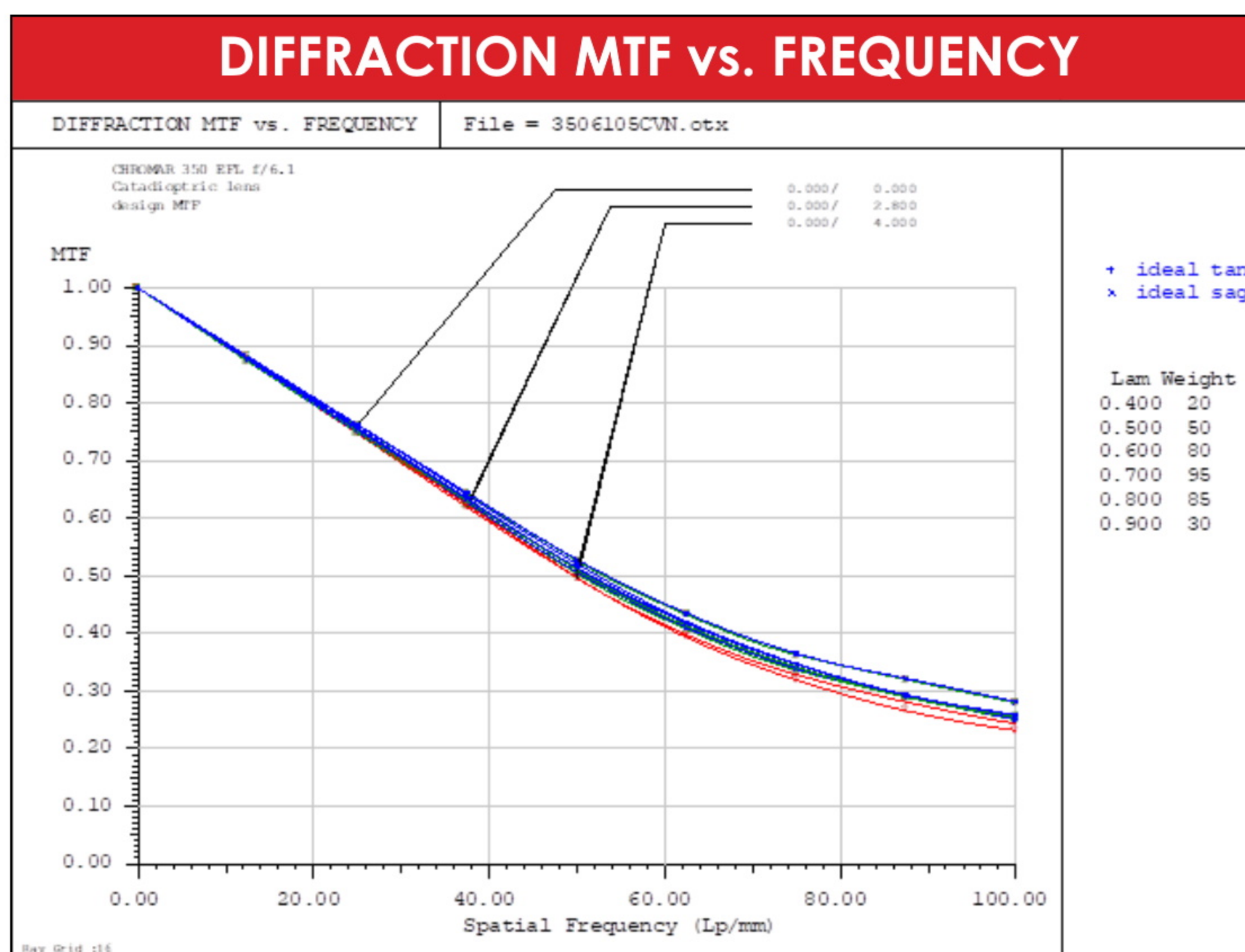
The lens is ruggedized, α -thermal design and has an excellent image across the entire field and operates in the Visual and NIR spectral ranges. Depending on AR coating, SWIR can be included as well.

The lens has a standard c-mount and weighs 680g.

The total distance from the front of the lens to image plane is 125 mm and outside diameter is 67 mm. The lens is fitted with a flange on the barrel for solid three-point-mounting. The diameter of this flange is 86 mm and isolates any stresses from the optical components.

The image diameter of 8 mm gives a field angle of 1.6° . A $1/2''$ CCD provides a horizontal field angle of 1.05° .

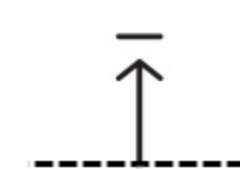
With a $5\mu\text{m}$ pixel sensor, at the Nyquist frequency of 100cy/mm , the lens achieves $>30\%$ modulation on-axis and 25% on the edge of the field.



350mm EFL



f/6.1



4mm image height

Spectrum

| V | N | S | M | L |
|----------------------------------|----------------------------------|-----------------------|-----------------------|-----------------------|
| 0.4-0.7 μm | 0.7-1 μm | 1-2 μm | 3-5 μm | 8-12 μm |
| <input checked="" type="radio"/> | <input checked="" type="radio"/> | <input type="radio"/> | <input type="radio"/> | <input type="radio"/> |

Type

| Zoom | Refracting | Catadioptric |
|-----------------------|-----------------------|----------------------------------|
| <input type="radio"/> | <input type="radio"/> | <input checked="" type="radio"/> |